

**Auckland:** Level 1, 110 Symonds Street,  
PO Box 91521, Auckland, NZ  
New Zealand .  
Tel +649 356 8490 Fax +649 356 8499

**Wellington:** Level 4,  
5-7 Willeston Street,. PO Box 2377  
Tel +644 472 2961 Fax +644 472 2966

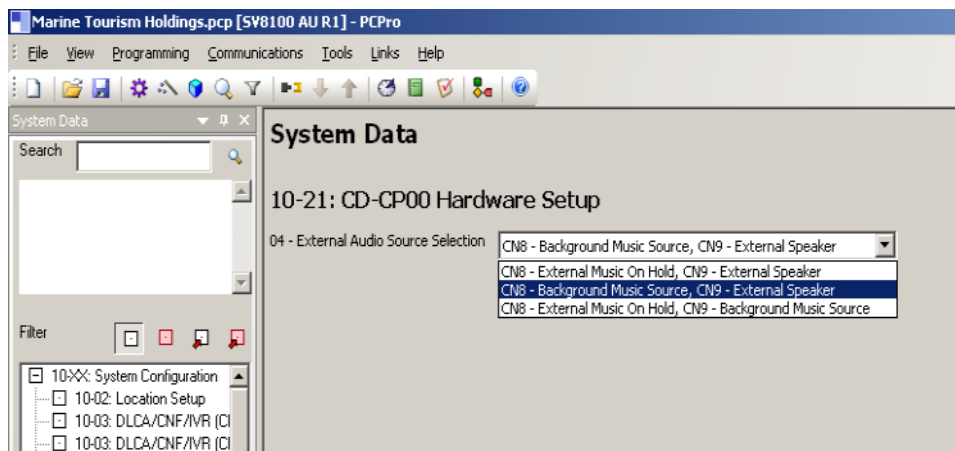
Author : Paul Warner  
Document Number: KTS TIB 0050 Release Number:1  
DID : +649 357 3403  
Date : March 02, 2009  
Email : [paul.warner@necbs.co.nz](mailto:paul.warner@necbs.co.nz)  
Number of pages : 2 including this page

---

## TECHNICAL NOTE: SV8100 MOH AND BGM FROM THE SAME SOURCE

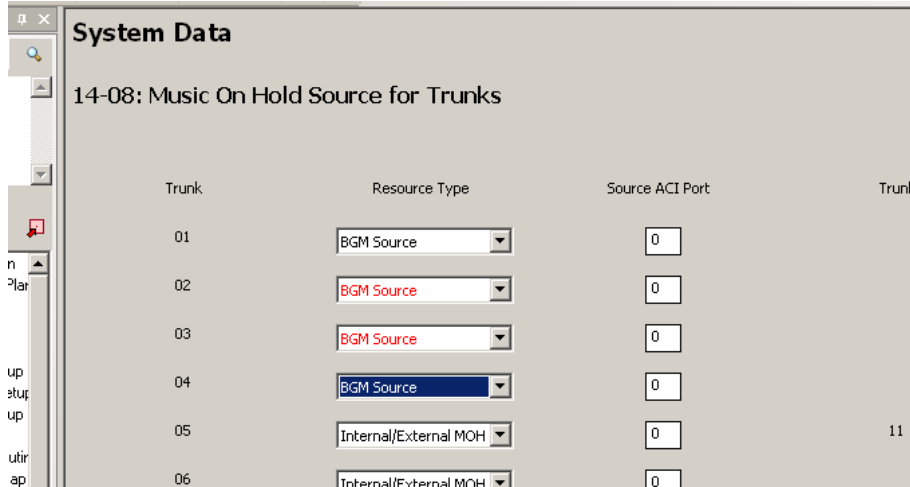
---

In NECA SIB 252 page 3 explains a method of setting up simultaneous Music On Hold (MOH) and background Music (BGM). This requires using a s plitter cable to feed both the MOH and BGM sources. The info below simplifies the procedure using only the CN8 MOH jack.



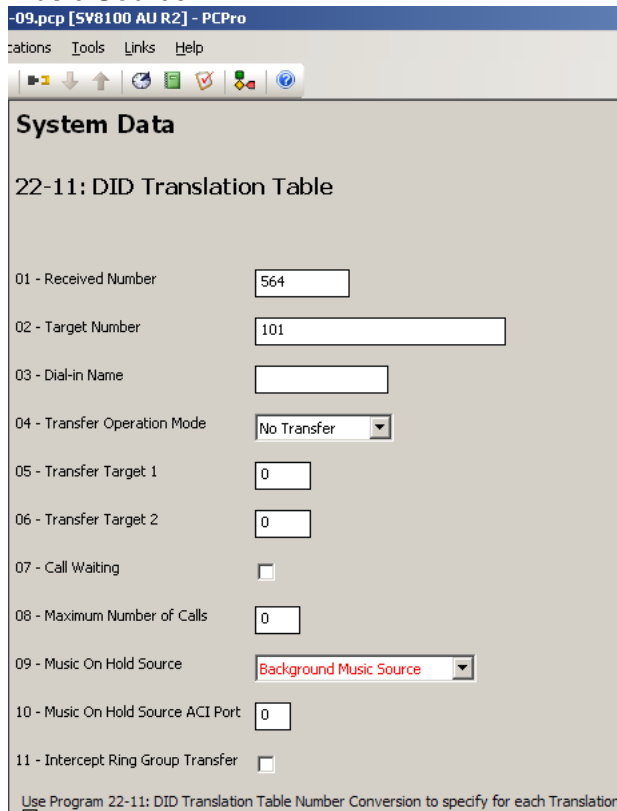
Set 10.21.04 to CN8 - BGM, CN9 – External Speaker.  
Plug the MOH into the MOH port CN8 on the CPU.

For trunks



In MB 14.08 set Resource type to BGM source for analog trunks and ISDN setup as "Normal" only. This will not work for DID ISDN.

For DID ISDN trunks you have to do this in the 22.11.09 Set to Back Ground Music Source.



Set BGM so that stations can dial the service code or press the BGM button set up MB 10.13.30 in the CLS settings for stations..