

# **NEC** Corporate Network Solutions

Level 1 - 110 Symonds Street, Auckland, New Zealand

PO Box 91-521 Auckland, Telephone : + 64-9-356 8490, Fax : +64-9-356-8499

## **TECHNICAL NOTE # 20016**

**TOPIC** : ICS 7400 110/120 Data Memory Conversion to 2000 IVS

**AUTHOR** : Glenn van Gorp

**DATE** : 9 November 2001

**ISSUE NO** :1

**TOTAL PAGES** :4

**SYSTEM TYPE** : 2000 IVS with C2 V0.09 Software

**SOFTWARE VER** : V 0.4.0

**HARDWARE VER** :

### **INFORMATION:**

**The following pages explain how the Data Memory conversion process is set-up and executed. Note NEC can not guarantee that all of the office data will be converted as differing complexities in site programming can not be evaluated. However our trials have been 100% successful to date, this includes sites with OAI, SMDR, & ISDN. Therefore this program is to be used AT YOUR OWN RISK.**

The Data Memory conversion file is located on the 2000 IVS MatWorks V2.4.0 Disk.

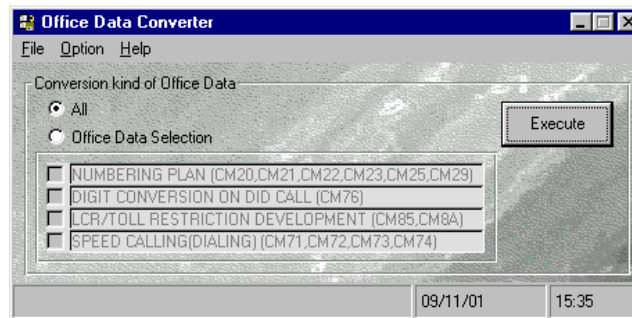
Go to the DMCONV directory and select the SETUP icon, follow the setup instructions.

See the following additional notes for DMCONV use.

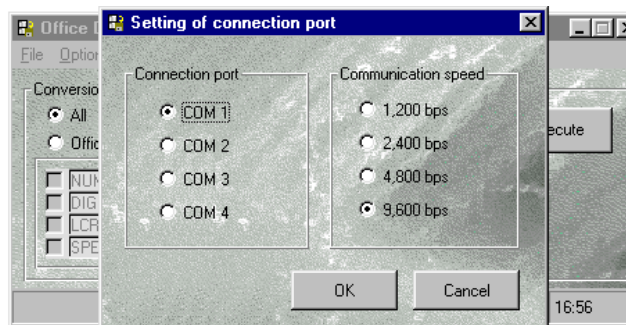
# Data Memory Conversion Instructions

## Step 1

Go to **Start / Programs** tool bar and select **Office Data Converter**. You will see the following screen.

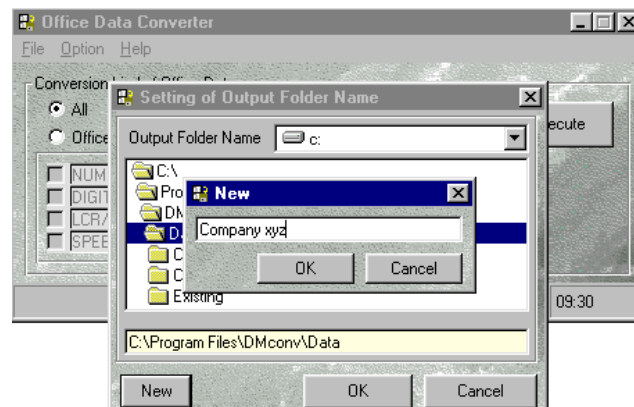


Click on **Option** and then **Setting Of Connection Port** select the correct COM port for your PC and select the 9600 bps communication speed. Make sure the 110/120 has been set to 9600 bps. See Below. **Note:** we do not recommend the use of a modem connection to down load the office data, this is due to the amount of online time required.



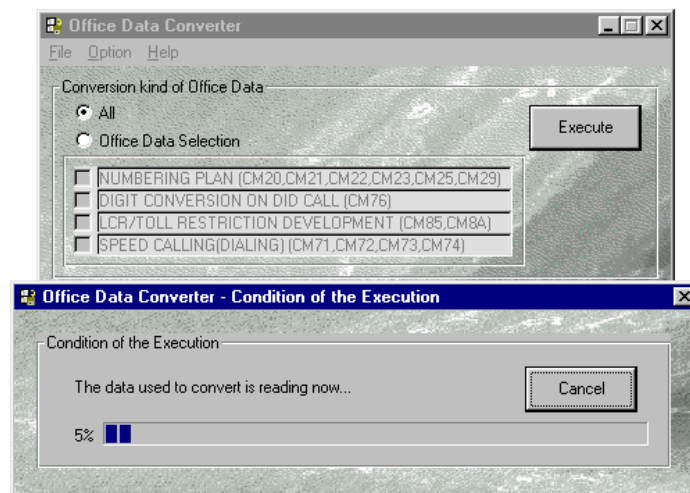
## Step 2

Select **File** then **Setting of Output Folder Name** select the appropriate drive and folder name and then select **New** on the lower tool bar. Enter your site name I.e. **Company xyz**, now click **Ok** then **OK** again. See Below.



## Step 3

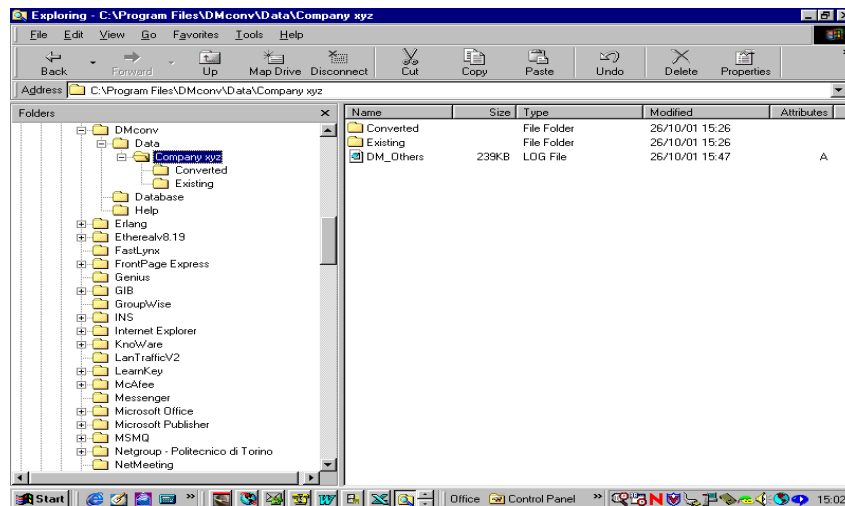
Select the conversion type generally **All** is used. **Note:** select the other options if required the other options can be handy i.e. if you want to list up LCR to review entered information. Select **Execute** to start the down load process. A process dialogue will be displayed that will indicate percentage complete. Note: Down load time will depend on how much data is contained in Command 10. As a guide a 4 PIM system will take about 1.5 hours to down load at 9600 bps.



## Step 4

Once the conversion process has been completed the data will need to be loaded into the 2000 IVS. The DMCONV program creates two folders under the name you specified in the drive / folder area, these two folders are called **Existing** and **Converted**. The **Existing** folder is for the 110/120 files, each file has 1000 lines of information which is in a CSV (Comma Delimited) format. These files can be opened from MS Excel. The **Converted** folder contains the converted 110/120 data in a CSV format, these files are 10,000 lines long each. **See Below**

To load the Converted files you need to open the 2000 IVS V2.4.0 MatWorx program and load the Converted CSV files via the Mach Script module. See NEC Technical Note 20011.



Each Converted file will take about 12-14 minutes to load at 19,200 bps.

A log file named DM\_Others is created, this highlights the data that was not captured in the given search parameters (Command Level) of the program. **See Above**.

Check the Mach Script module response (Column ED) for each CSV file processed, to confirm data has been processed correctly.

There is a good online help section available, this online help section lists all of the commands that the program converts, if you suspect data has been missed check this area first.

**Note:** Some Speed Dialing Memory allocation areas are not converted & memory expansion may be required, this is dependent on system data. See Online Help for more details.

*Scollay Holdings would like to thank Warren Seddon of Cogent Communications for discovering this program.*