

Auckland: Level 1, 110 Symonds Street,
PO Box 91521, Auckland, NZ
New Zealand .
Tel +649 356 8490 Fax +649 356 8499

Wellington: Level 4,
5-7 Willeston Street, PO Box 2377
Tel +644 472 2961 Fax +644 472 2966

Author : Paul Warner

Document Number: TOPAZ TIB 001 Release Number: 1

DID : +649 357 3403

Date : April 20 . 2005

Email : paul.warner@necbs.co.nz

Number of pages : 7 including this page

TECHNICAL NOTE: METHOD OF UPGRADING TOPAZ SYSTEM SOFTWARE

This Topaz TIB details the methods of upgrading the Topaz system main software.

There are two methods of upgrading the NEC Topaz system software. Both require the use by the field tech of a EXIFU-A card. This is the maintenance card with the LAN connection and a Flash ROM reader. The two methods are:

1. WEBPro LAN upgrade.

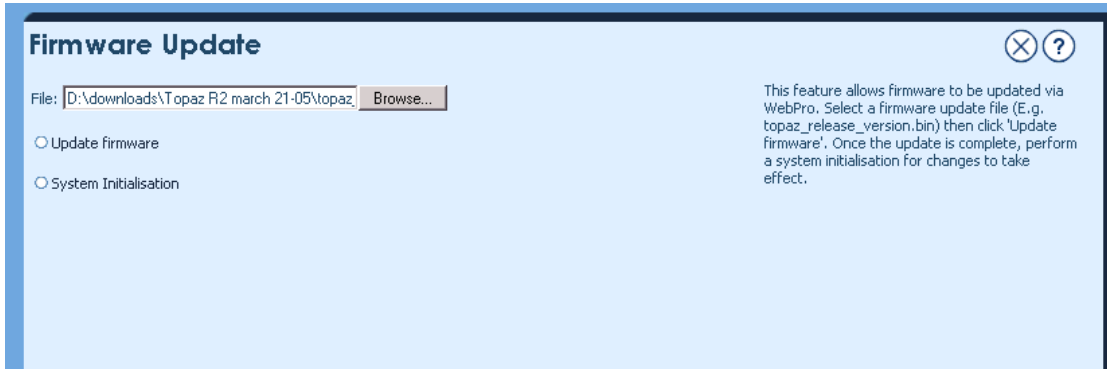
Items required.

- a. A laptop PC with a LAN card that can access the IP address if the Topaz system.
- b. The latest version of PCPro installed on the laptop
- c. A EXIFU-A card
- d. A LAN crossover cable or a HUB
- e. This document.

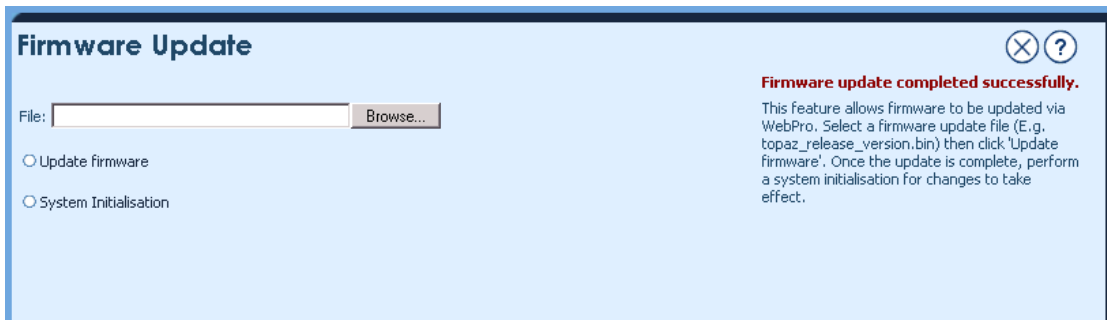
2. Method of upgrading.

- a. Upon arrive on site pres OPAC 3 on any display phone to see what the existing version of software installed on the system is.
- b. Connect to the existing serial maintenance card and download the customer database. Save this as a current release named file. The reason for downloading with the existing card in place is just incase there is an issue with the back up battery failing when the power is turned off.
- c. Ensure that the HOT/COLD switch is set to **HOT**. Turn of the system. Remove the existing EXIFU-B card and insert the EXIFU-A card. Make sure that the card is seated correctly as the card is only held in when the cover is on.
- d. Plug in your LAN cable and power on system

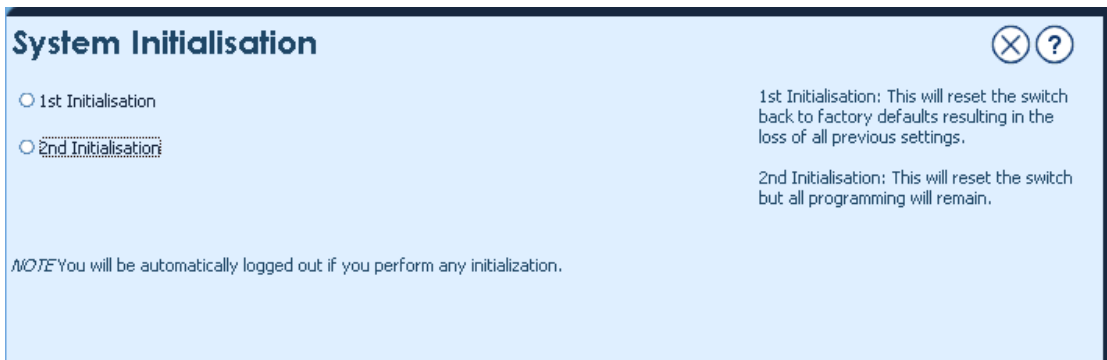
- e. Run up your web browser and point it to the IP address of the Topaz. The default address is 172.16.0.10 and login with the normal login and password for this site..
- f. Go to the Firmware update area and select the update binary file like "topaz_release_2.00f.bin" which should be on your hard disk.



- g. Select update firmware and follow the screen prompts. You should see a progress bar indicating the upgrade process. When upgrade process is completed (about 5 minutes) you should a completed message on the screen.



- h. Go to the System Initialization icon and do a **TYPE 2** initialization If you do a type 1 the system will default, or you could simply power off and on the system.



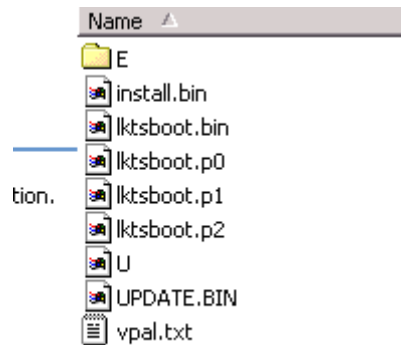
- i. When the system comes back online verify that the system is the new version number . (OPAC 3)
- j. Do a new system download and save as a R2 file.
- k. Down power the system and remove the EXIFU-A card and replace it with the original serial card and replace the cover etc.

FLASH ROM UPGRADE

The second method of upgrading the system software is with a Flash ROM of 8 Meg or better. An old Topaz VRS flash ROM would be ideal.

This method is

1. Extract the ZIP file with a file name like this
"topaz_release_2.00f_cf.zip"
2. Place these file onto the compact flash rom. The file list in the CF root directory should look like this.



3. Go on site and do a download from the system with the old serial card and save it as a current release file name.
4. Below are pages take out of the Topaz Hardware Manual explaining how to do the upgrade. Read carefully before attempting..

2.1 General

The system main software is initially stored in the Flash Memory located on the PCB of 924M KSU. It can be upgraded by the new software on the CF (Compact Flash) card.

2.2 Before Upgrading the Main Software

Before upgrading the Main Software, the following preparations are necessary.

- ① Prepare the CF Card (8MB, or upwards), and store the new main software on the CF Card by PC. (New Main Software is supplied by NEC Business Solutions.)
- ① Prepare the EXIFU-A1 PCB (if the system does not have it).

2.3 Main Software Version Confirmation

The main software version is able to confirm by the following operation at the Display Type Key Telephone.

1. On-Hook Condition.

TUE 27 01:00PM
200 EXT200



2. Press  OPAC and dial **3**

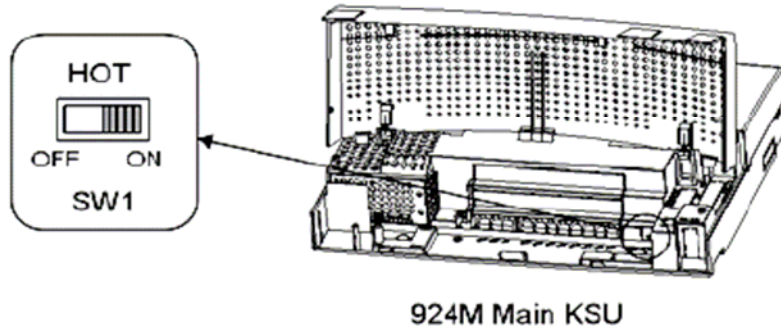
Main Ver.: 01.00
0-60-B9-C1-F9-7C



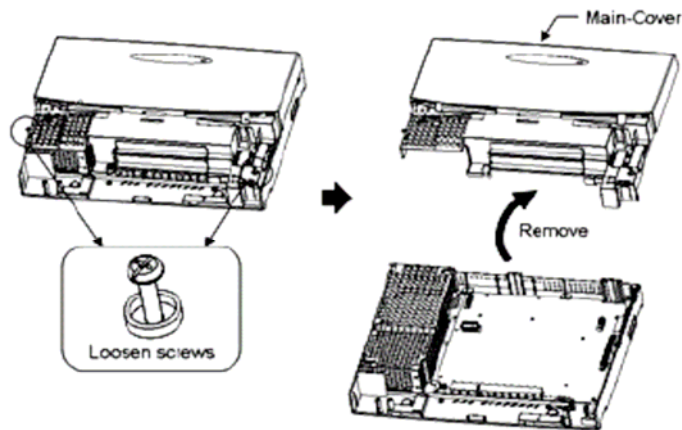
- The display will automatically return to "Time & Date" after 3 seconds.

2.4 Upgrading the Main Software

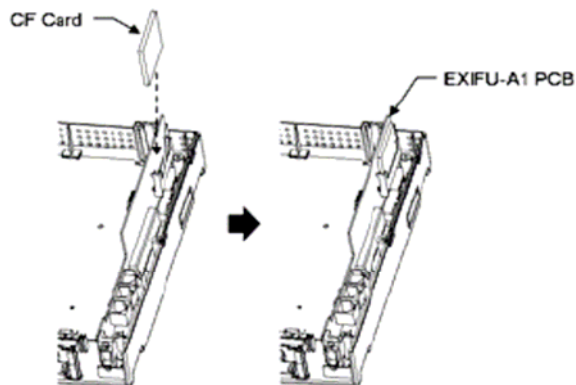
1. During the system power ON, open the Sub-Cover and make sure the SW1 is set to "HOT"



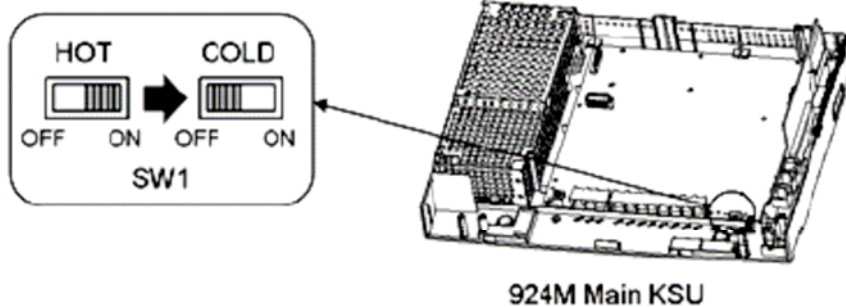
2. Power OFF the system.
3. Loosen two screws and remove the Main-Cover.



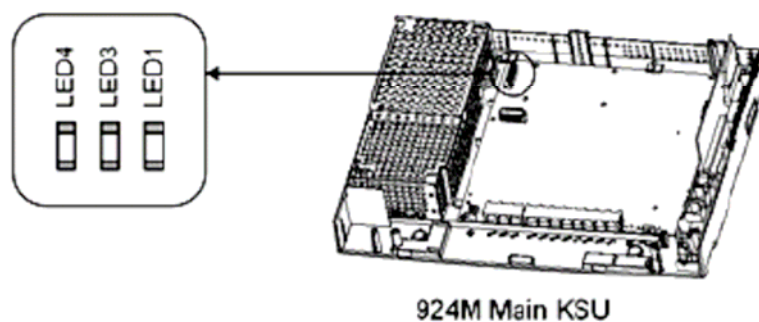
4. Insert CF card into the CF Slot on EXIFU-A1. (The EXIFU-A1 should be temporary installed if the system does not have it.)



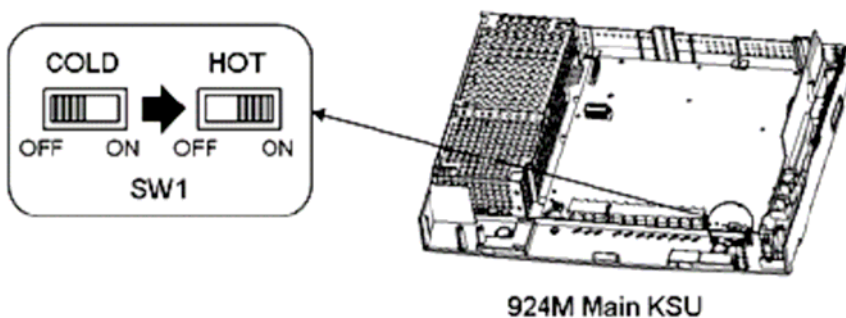
5. SW1 is set to "OFF" (COLD Start).



6. Power ON the system. LED1 turns on and LED4 starts fast blinking (approx 2~3 min). When the loading process is complete, the LED4 will stop blinking.

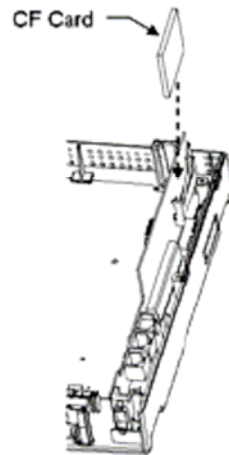


7. Set SW1 to "ON" (HOT Start).



8. Power OFF the system.

9. Remove the CF Card from the CF Slot on the EXIFU-A1.
(Remove the EXIFU-A1 if it is temporarily installed.)



10. Replace the Main-Cover and Sub-Cover.
11. Power ON the system.
12. Confirm the software version using the "OPAC" and "Dial 3" operation.

Warning. You must follow this exactly as it says otherwise you may lose the customer database. I have tested this method in my lab and it works fine..

Download database from system and save as the new release version..